

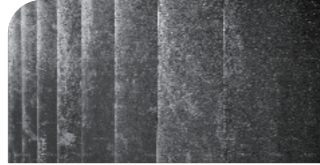
## LEATHER PRODUCTION FAQ



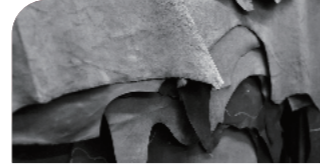
Complicated in Pattern drawing and making intelligent



Inefficient manual cutting



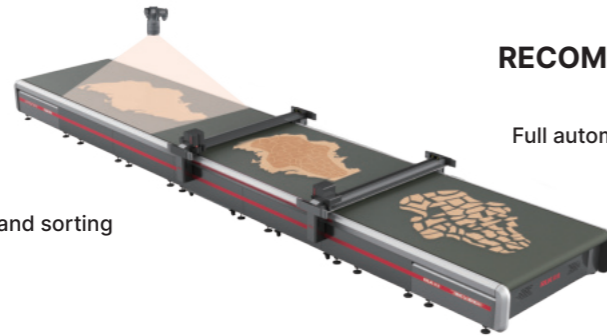
Inefficiency in defect recognition



Low utilization of raw materials

## FULL SOLUTION

MTC06-D-3018GR



### RECOMMENDED MATCHING

MTC Series

Full automatic leather cutting machine

- ✓ Integrated feeding cutting and sorting
- ✓ Double beam design
- ✓ Double visual positioning



### SIMPLIFY PRODUCTION MANAGEMENT

Realizing the intelligent and automatic management of the whole production process greatly reduces the manual intervention and improves the production efficiency. Help Enterprises to reduce the cost of human resources and operating costs.



### OPTIMIZE RAW MATERIAL UTILIZATION

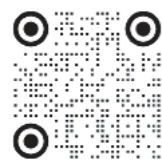
With its highly customized features, the super discharge system maximizes the utilization of dermal resources from raw materials to finished products, increasing dermal utilization by 1%-6% and increasing profit margin.



### ACCELERATE PRODUCT DELIVERY

Facing the increasingly diversified and individualized demand of the market, the intelligent leather management system can quickly adjust the production schedule to ensure the efficient delivery of products.

## NINGBO RUKING INTELLIGENT TECHNOLOGY CO.,LTD



Tel: 18658211808 E-mail: jll@rjuk.com Website: www.ruk-tech.com

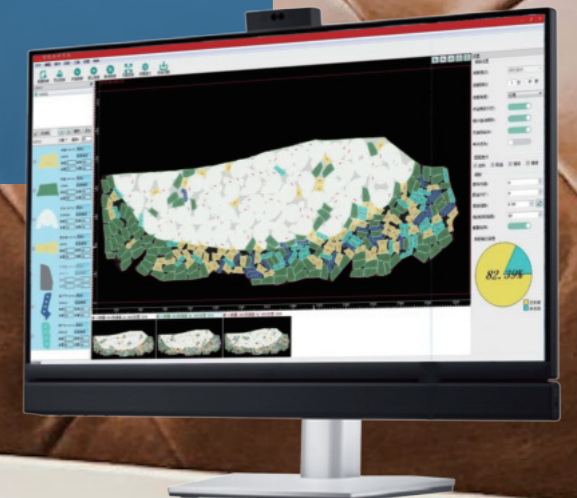
Production base: No.9,East Siming Road,FenghuaDistrict,Ningbo,China

Address: Building 12,Zhongxin YunguIndustrial Park,  
222 JuchaoRoadJiangkou Street,Fenghua District,Ningbo City

**RUK 润金**  
Cutting System

# Intelligent Leather Management System

INTELLIGENT LAYOUT ALLOWS EVERY INCH OF LEATHER TO BE UTILIZED



Leather utilization increased by **1% → 6%**

Make use of each inch genuine leather!

# INTELLIGENT LEATHER MANAGEMENT SYSTEM

## Product Description

Intelligent Leather Management System is a leather products industry service management system, which provides leather scanning, defect identification, layout and cutting for leather products manufacturers.

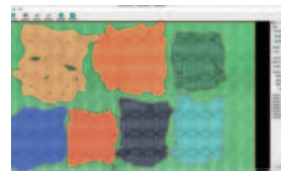
The main functions include providing users with leather cutting, automatic identification of defects, artificial circle defects, automatic typesetting, manual typesetting, order management, template group management, leather cutting, machine debugging and other functions.



## MAIN FUNCTION

### INTELLIGENT IDENTIFICATION SYSTEM

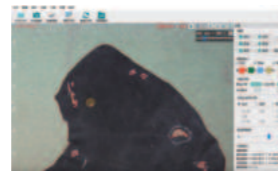
- The camera quickly acquires clear dermis outline and defect details, supports local box selection recognition function, easily marks and automatically removes the defects in the raw materials (recognition rate 80% -85%)



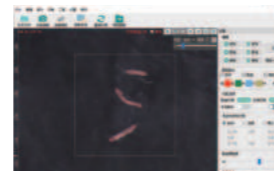
Quickly extract the outer contours of colored leather



Quickly identify leather contours and blemishes



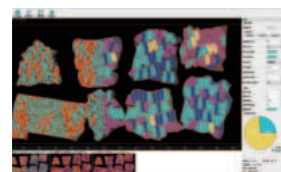
Partial frame selection identification function



Partial frame selection identify weak defects

### INTELLIGENT DISCHARGE OPTIMIZATION SYSTEM

- Increased dermal utilization by 1%-6% (Based on measured data)
- Support to print leather QR code, according to the product process requirements, can be customized area layout (Order/multi-skin combination/multi-code mixing/nesting, etc)
- Implement level area nesting (Up to 7 levels), including grading of cut/seam/material defects. While ensuring the discharging performance of the high-grade area, the low-grade template is interspersed to maximize the utilization of the subarea.
- 24 hours Non-stop off-line layout, cutting automatic alignment.
- Support docking third party operation control system.



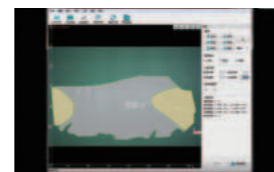
Leather special shipped automatic discharge function



Rolling material tiling



Custom area multi-skin layout



Level partition discharge function

### INTEGRATED PRODUCTION MANAGEMENT SYSTEM

- Built-in order management, template group management and cutting task management functions, to achieve scanning-layout-cutting full process automation management. Save labor, convenient and efficient.



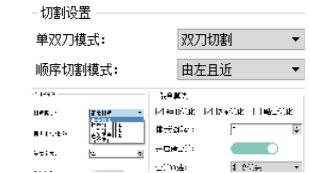
Order management function



Template Group management functionality

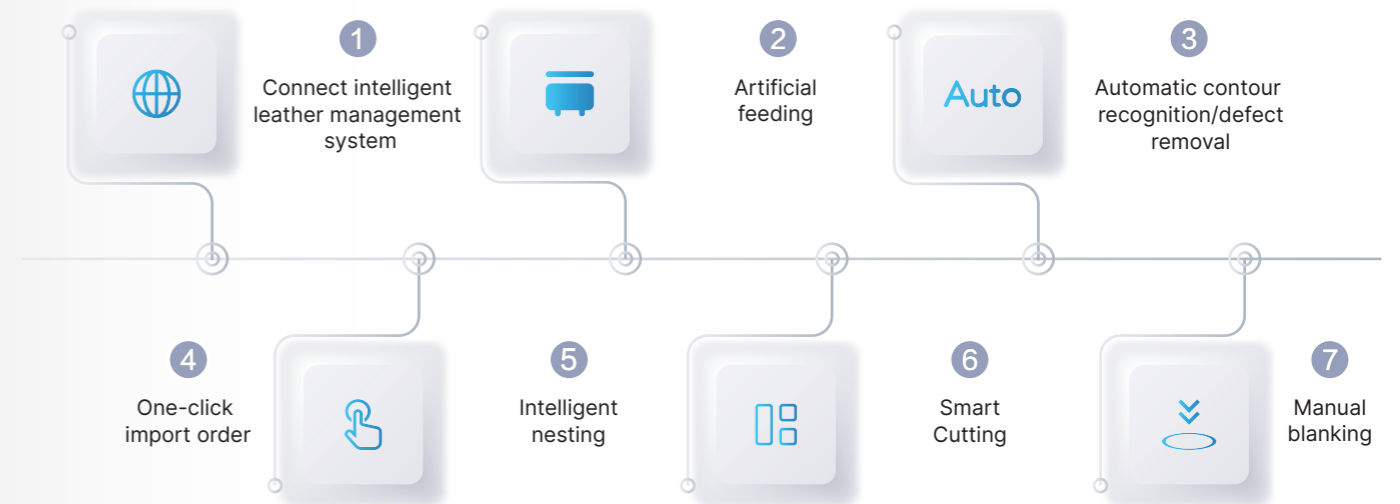


Cutting task management function



Layout/cutting settings

## WORK FLOW



## APPLICATION SCENARIO

